

PERFECTA-T 32

ALARM CONTROL PANEL

The **PERFECTA-T** series alarm control panels are designed to secure small and medium-sized buildings, such as apartments, single-family houses, terraced segments, offices, small businesses etc. They provide security in accordance with EN 50131 Grade 2 requirements.

The system based on the **PERFECTA-T 32** control panel is characterized by simple configuration as well as easy and intuitive operation. Keypads are used to configure and operate it. It can also be controlled with keyfobs working in the 433 MHz frequency band (if the **INT-RX-S** module is connected to the control panel).

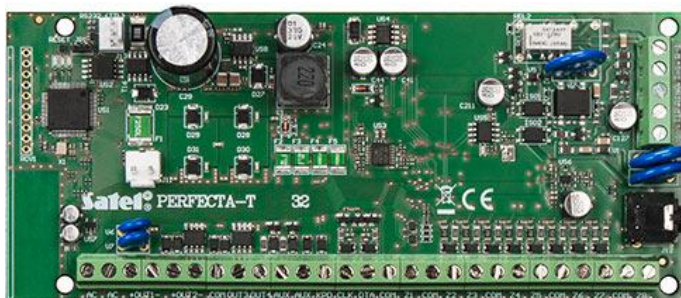
The built-in PSTN telephone dialer can be used for event reporting (e.g. to the security agency monitoring station) and voice messaging as well as for audio verification (listening in to the sounds from the protected building).

The control panel electronics board comes with 8 wired zones and 4 wired outputs. Their number can be increased by connecting extension modules: **INT-E** zone expanders and **INT-O** or **INT-ORS** output expanders. This allows you to expand the system by adding more detectors, sirens and even actuators (to control the garage door, roller blinds, garden sprinklers).

The control panel enables the system to be divided into two partitions, with three selectable arm modes (day, night, full). Each zone can be assigned to one or both supervised areas.

You can configure the system in two ways: by using the intuitive **PERFECTA Soft** program (from a computer connected with a RS-232 (TTL) cable) and by means of a keypad, using shortcut keys in the service menu.

- compliance with EN 50131 Grade 2
- from 8 to 32 programmable wired zones:
 - NO, NC, EOL, 2EOL/NO, 2EOL/NC configuration to choose from
 - support for roller shutter and vibration detectors
- from 4 to 12 programmable wired outputs
- 2 power outputs on the mainboard
- built-in modules:
 - PSTN telephone dialer (reporting to the station, voice notifications)
 - voice module (play-back of voice messages for telephone messaging)
 - audio alarm verification (listening in to sounds from the building)
- division of the system into 2 partitions:
 - 3 arm modes in each partition
 - option to assign each zone to two partitions
 - user control or timer control option
- communication bus for connecting keypads (**PRF-LCD**), expansion modules (**INT-E**, **INT-O**, **INT-ORS**) and 433 MHz keyfob receiver expander (**INT-RX-S**)
- system control by using:
 - **PRF-LCD** keypads (up to 4)
 - remote control keyfobs operating in the 433 MHz band (up to 15) – the **INT-RX-S** module is required
- ability to update the software (firmware)
- codes:
 - 15 user codes
 - 1 service code
- editing names (of users, partitions, zones, outputs and modules) for easier control and supervision of the system



- timers:
 - 8 timers with the exceptions setting option
- 3584 events memory
- automatic diagnostics of the basic system components
- built-in switching power supply:
 - overload protection
 - protection against deep discharge of the battery
 - battery charging current control
- programming the control panel settings:
 - keypad
 - computer with the **PERFECTA Soft** program installed, connected to the control panel RS 232 (TTL) port

TECHNICKÉ INFORMÁCIE

Hlasové správy	16
Pamäť udalostí	3584
Skupiny	2
Timery	8
Rozmery dosky elektroniky	160 x 68 mm
Pracovná teplota	-10...+55 °C
Napätie napájania ($\pm 15\%$)	18 V AC, 50-60 Hz
Odber prúdu v pohotovostnom režime	100 mA
Maximálny odber prúdu	160 mA
Hmotnosť	100 g
Maximálna vlhkosť ovzdušia	93 \pm 3%
Odber prúdu z akumulátora - v pohotovostnom režime	90 mA
Napätie zahĺasenia poruchy akumulátora ($\pm 10\%$)	11 V
Napätie odpojenia akumulátora ($\pm 10\%$)	10,5 V
Trieda prostredia podľa EN50130-5	II
Maximálny odber prúdu z akumulátora	130 mA
Programovateľné drôtové vstupy	8
Maximálny počet programovateľných vstupov	32
Programovateľné drôtové výstupy	4
Maximálny počet programovateľných výstupov	16
Napájacie výstupy	2
Komunikačné zbernice	1
Klávesnice	do 4
Stupeň zabezpečenia podľa EN 50131	Grade 2
Zaťažiteľnosť výstupu AUX	500 mA / 12 V DC
Odporúčaný transformátor	40 VA
Užívatelia	15
Zaťažiteľnosť výstupu KPD	500 mA / 12 V DC
Rozsah výstupných napätí	10,5V...14 V DC
Prúd nabíjania akumulátora	500 mA
Výstupné napätie zdroja	12 V DC $\pm 15\%$
Telefónne čísla na oznamovanie	8
Výstupný prúd zdroja	2 A
Zaťažiteľnosť nízkoprúdových programovateľných výstupov	25 mA / 12 V DC
Zaťažiteľnosť vysokoprúdových programovateľných výstupov	1000 mA / 12 V DC